

# MPG

## Wheelchair-Accessible Swing Gate



### For wheelchairs, bicycles and goods deliveries

MPG swing gates are the optimum solution for outdoor barriers when a large passage opening is necessary. It can be free-standing or used in combination with a MPT turnstile. The swing gate has an opening angle of 90° in both directions and can be controlled by all conventional access control systems. As an option, the swing gate can be expanded with a single- or double-sided induction loop that reliably detects the presence of bicycles and wheelchairs.

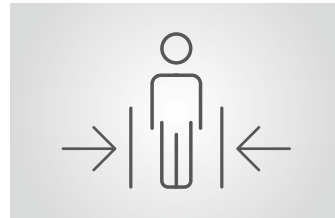
The swing gate is energy-efficient, maintenance-free and quiet thanks to its MHTM™ drive technology. Low impact forces and sensitive contact detection ensure user safety and compliance with strict European standards. With a variety of material options, interlocks and supplementary attachments, MPG swing gates can be individually adapted to the desired purpose.



**For wheelchairs, bicycles and baggage**  
MPG swing gates are the optimum solution when large opening widths are necessary. A wide variety of options are available for access control.



**Innovative drive technology**  
The MHTM™ drive unit is maintenance-free, energy-efficient, and has an exceptional soft-start action.



**Maximum safety**  
Low impact forces and sensitive contact detection offer optimum protection for persons and their means of locomotion.



**Easy access to components**  
All the components necessary for operation are accommodated in the main beams, considerably simplifying assembly, commissioning and maintenance.

ACCESS

AFC

IMMIGRATION

BOARDING

# MPG

## Wheelchair-Accessible Swing Gate

- > Controlled access for cyclists and wheelchair users
- > Sensitive impact detection for maximum safety
- > Induction loop detector for detection of bicycles and wheelchairs (optional)
- > Low power consumption thanks to maintenance-free MHTM™ drive
- > Designed for 10 million opening and closing cycles



Technical data	MPG 162	MPG 172
Installation	in combination with turnstile system	free-standing
Drive technology	MHTM™	MHTM™
Voltage	110 – 240 VAC, 50/60 Hz	110 – 240 VAC, 50/60 Hz
Power consumption	85 W (incl. interlock)	85 W (incl. interlock)
Duty cycle	100 %	100 %
Opening/closing times	approx. 3 s	approx. 3 s
Passage width	1087 mm	1070 mm
Enclosure rating	IP 43	IP 43
Dimensions (L x W x H)	1451 x 500 (excl. guide bar) x 2235 mm	1623 x 500 (excl. guide bar) x 2235 mm
Weight	approx. 220 kg	approx. 250 kg
Temperature range	-25 to +50 °C	-25 to +50 °C

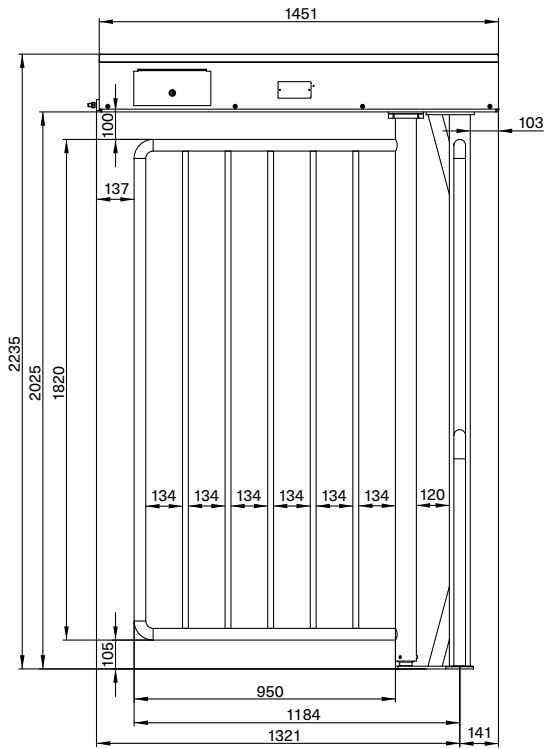
Options	
Material	Powder-coated galvanised steel in standard or special colours; stainless steel 1.4751
Sensors	Single-sided/double-sided induction loop to detect wheelchairs and bicycles
Reaction to power failure	Free access or auto-locking on power failure
Attachments	Illumination, base frame, base mounting set, roof, extension column, gate end display (GED)

### Potential applications

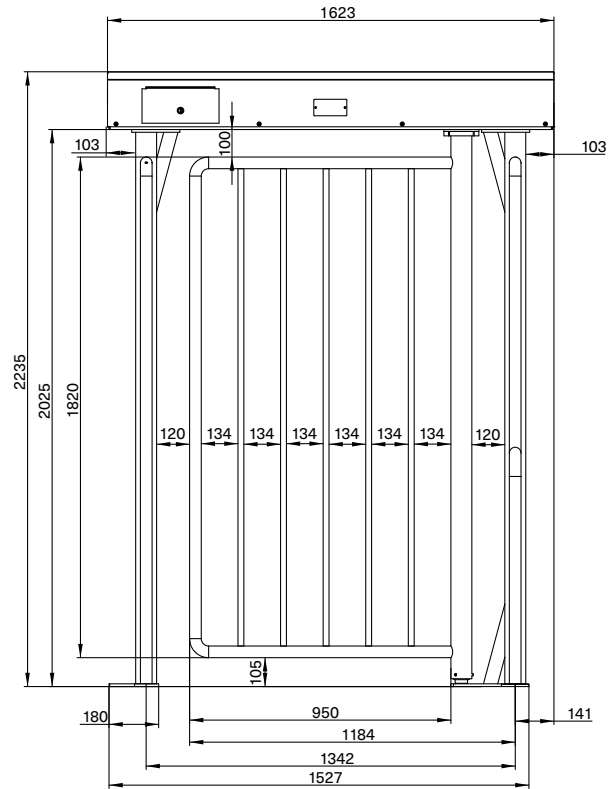
### Standard colors

RAL 7042	RAL 7016	RAL 6005

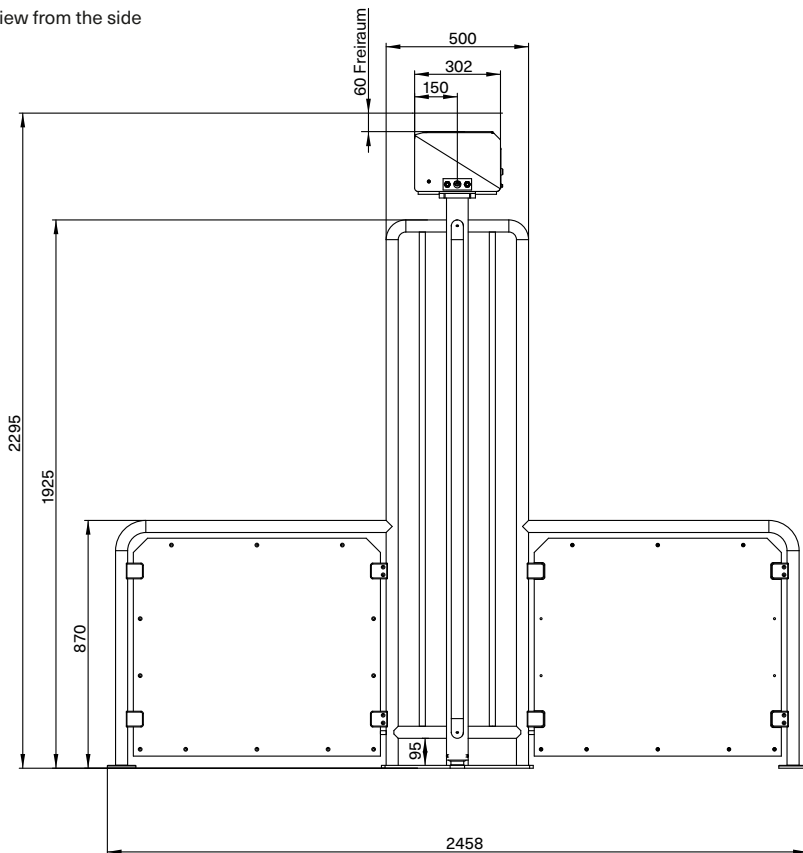
MPG 162  
View from inside



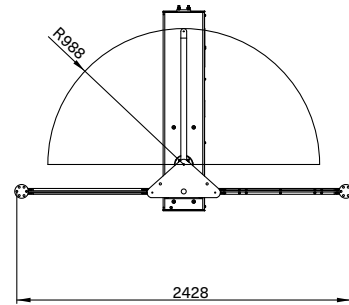
MPG 172  
View from inside



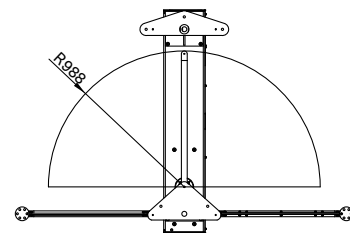
MPG 162 und MPG 172  
View from the side



MPG 162  
View from below



MPG 172  
View from below



# Access to Progress

Magnetic stands for pioneering products – in every way. Our access control systems for vehicles or pedestrians clear the way for thousands of people every day – at car parks, toll gates, stations, airports and in buildings. Our technology is also pioneering, however: with innovative drives, intelligent control systems and well thought-out details it provides maximum safety and longevity. Are you also on the path to Magnetic?



## Vehicle barriers

- Access barriers
- Parking barriers
- Toll barriers
- Special barriers



## Pedestrian gates

- Turnstiles
- Swing gates
- Tripod gates
- Retractable gates
- Wing gates



## Terminals

- Cars
- Trucks