

Pedestrian Gates

MPP 112 / 212

The MPP series is designed to control pedestrians entering or exiting restricted areas, usually under surveillance, in low security situations. Personal surveillance is therefore recommended as the barrier can be breached.

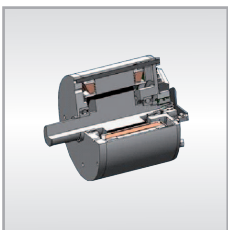
The barrier consists of a rotating center, at 3 x 120 degrees, providing single access through steps of 1 x 120 degrees. The operation of the barrier allows for controlled bi-directional pedestrian flow and is capable of blocking in either direction, or free rotation in either direction.

This model can be used in two directional control applications with a high usage of pedestrian traffic.



Housing and quality

The housing of the MPP 112 is made of stainless steel 430 with protection class IP32. The standard type is for indoor installations. Furthermore, for outdoor installations, Magnetic provides a special type model of stainless steel 304 with protection class 44.(MPP 212). For this model, no roofing is required.



Motor and control units

The MHTM™ motor with sensor technique offers almost silent operation. The motor allows a direct drive of the rotating center without additional gearing. It operates under constant power and thus prevents condensation and prolongs the life of the motor. In connection with the universal MBC controller we can provide features that are very useful and expedient for our customers.



Drop-Arm mechanism

In case of an emergency or power failure, any pedestrian gate must not be an obstacle. The optional available, patented drop-arm mechanism releases the arms of the tripod so that the gate can be safely passed. Afterwards, the arms return to their correct position and the rotating center resets and returns to the homing position.



Typical Fields of Application

Magnetic pedestrian gates are designed for a huge number of applications. The MPP series may be used for train stations, airports, sport stadiums, museums, company entries, public baths, public convenience.

Technical data
MPP 112 / 212

Voltage	115 - 240 V AC
Frequency	50 - 60 Hz
Current nom.	200 mA
Current max.	850 mA
Power consumption max.	140 W
Duty cycle	100 %
Protection class	IP 32/44
Housing dimensions (WxLxH)	300 x 400 x 1035 mm
Weight	40 kg
Temperature range	-25 to +50 °C

Dimensional drawings
